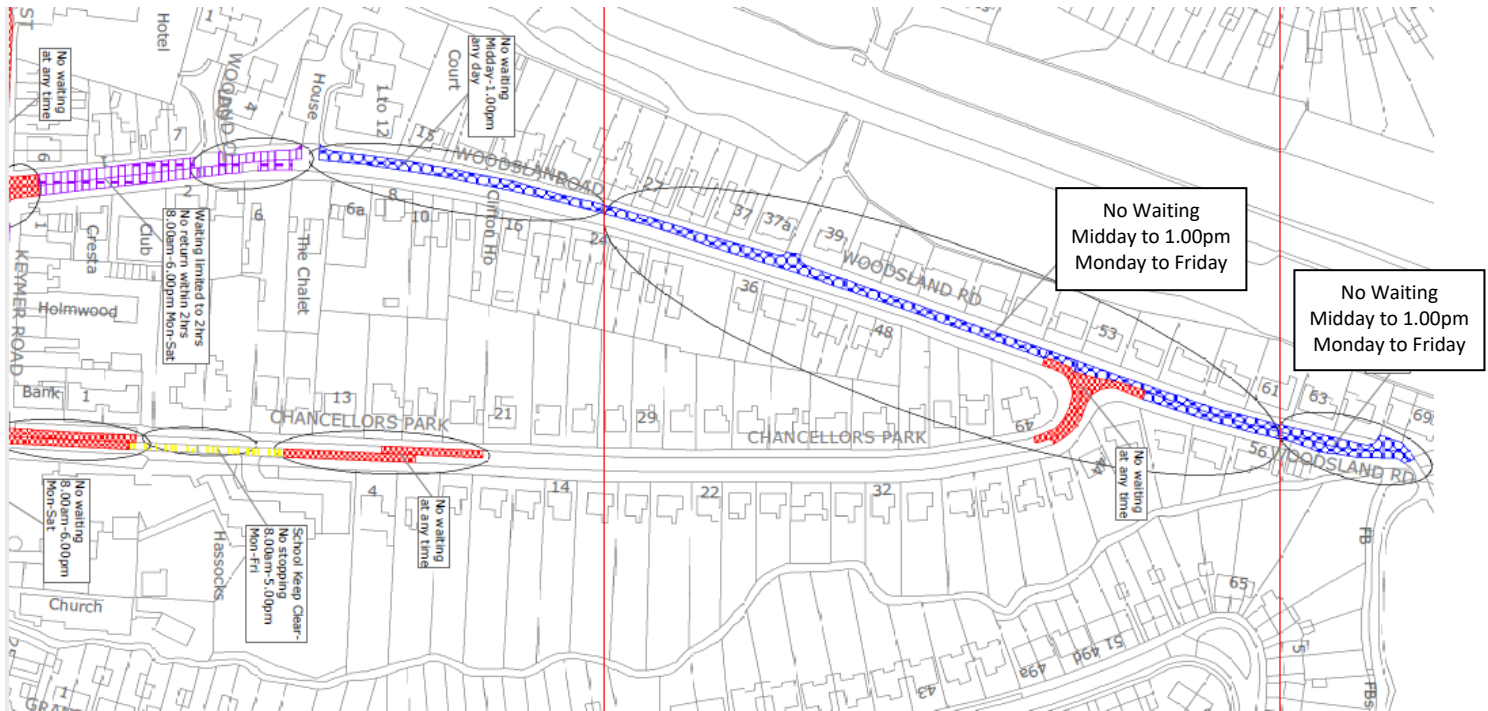


Chancellors Park - Parking Changes



Changes proposed in this road:

1. Due to resident's requests, restrictions down the length of your road have been minimised and these will be two short double yellow lines about a third of the way up the road to allow for passing places.
2. It is also proposed that the lines at the top of the road (adjoining Keymer Road) are changed from single to double as this is becoming a dangerous crossing point, with additional added double yellow lines at the bottom of the road at the junction of Woodland Road due to Public Service vehicles having issues with getting through due to poor parking.